

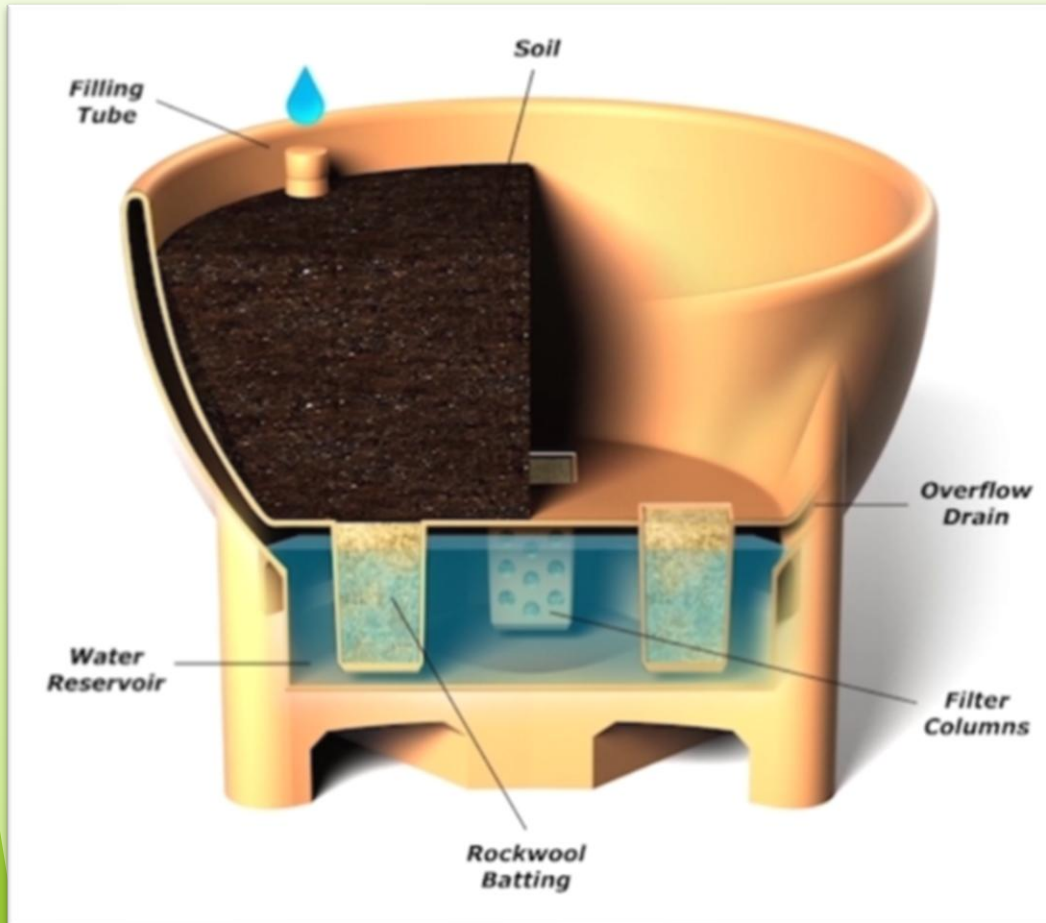


SYBERTECH
Waste Reduction Ltd.



Millennium Series
**Self-Watering Reservoir Planters &
Hanging Baskets**

How they work:



Designs and sizes available:



Sconce Planter

D: 24" W: 13" H: 16.25"
4.1 US Gallons / 15.52 L
0.56 Cubic Feet of Soil



Conical Planter

D: 33" H: 24"
13.2 US Gallons / 49.9 L
3.25 Cubic Feet of Soil



Hanging Bowl Shaped Planters

D: 20" H: 9" / 6.85 L
D: 24" H: 12" / 10.24 L
20"=0.5 Cubic Feet of Soil
24"=1.3 Cubic Feet of Soil



Round End Planter

L: 48" W: 20" H: 23"
19.67 US Gallons / 74.4 L
4.0 Cubic Feet of Soil



Bowl Planter

D: 36" H: 23.6"
13.91 US Gallons / 52.6 L
5.5 Cubic Feet of Soil



Flat End Planter

L: 48" W: 20" H: 23"
21 US Gallons / 79.49 L
4.00 Cubic Feet of Soil



20 Inch Square Planter

L: 20" W: 20" H: 23"
7.4 US Gallons / 28 L
1.03 Cubic Feet of Soil



Square Planter

L: 34" W: 34" H: 26"
41.28 US Gallons / 156 L
6.40 Cubic Feet of Soil



Rectangular Planter

L: 54" W: 26" H: 21"
50.14 US Gallons/189.91 L
8.60 Cubic Feet of Soil



Round Planter

D: 30" H: 20"/ 95.56 L
D: 36" H: 24"/ 137.61 L
D: 42" H: 30"/187.3 L



Divider Planter

L: 48.7" W: 17.8" H: 22"
9.72 US Gallons / 36.79 L
2.40 Cubic Feet of Soil

Perfect for use in Protected Bike Lanes and Crosswalk Applications



[Click here to view Protected Bike Lane video](#)

Great for Outdoor Patios, School/Community Gardens
& to control the flow of movement in any area



Hanging Baskets available in 20 or 24 inch size



**Stainless
Steel Chain &
Hardware**

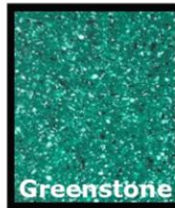
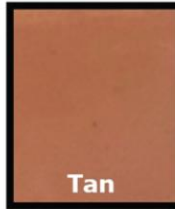
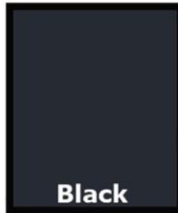


THE DIVIDER PLANTER

Designed to show off an abundance of color and character to any roadside, Bike Lane/Cycle path, Bridge or retaining wall without “getting in the way”. This self-watering planter has a very small footprint and offers minimal intrusion to any walkway or roadway. Originally designed to be bolted to the top of a Jersey Barrier, the Divider Planter has shown itself to be very adaptable to multiple applications.



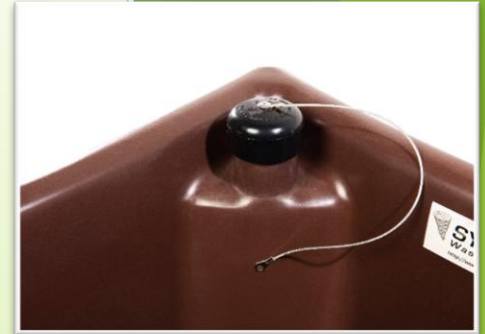
Available Colors & Stone Finish Options



Internal View



Rockwool Wicking
Material



Built-in Filler Tube

Bottom View



All planters have lifting slots for easy relocation

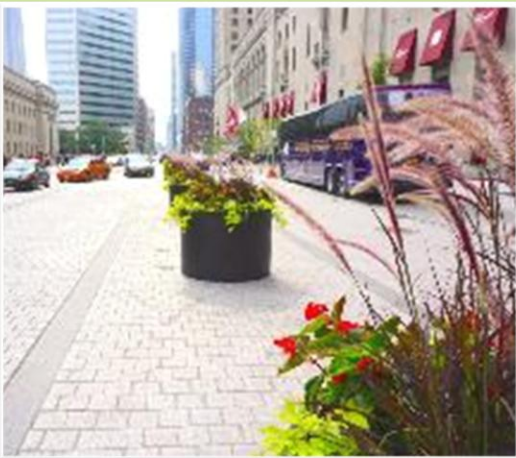
Millennium Series Self-Watering Planter Soil and Water Capacities

Planter Style and Size	Soil Capacity in Cubic Feet	Water Capacity in US. Gallons	Water Capacity in Litres
Round - 30 inch	3.82	25.25	95.55
Round - 36 inch	7.50	36.35	137.60
Round - 42 inch	13.90	49.50	187.30
Square - 34 inch	6.40	41.30	156.00
Conical - 33 inch	3.25	13.20	49.90
Rectangular - 54 inch	8.60	50.15	189.80
Divider Planter - 48 inch	2.40	9.72	36.79
Hanging Basket - 24 inch	1.30	2.70	10.25
Hanging Basket - 20 inch	0.50	1.80	6.85
Sconce Planter	0.56	4.10	15.52
Bowl Planter	5.50	13.90	52.62
Flat End Planter	4.00	21.00	79.49
Round End Planter	4.00	19.67	74.46
20 In Square Planter	1.03	7.4	28



Soil composition will differ with climate and with your choice of shrubs and flowers. As a general rule of thumb avoid loosely packed soils such as a Store Bought Potting Mix and use a denser soil or Pro-Mix Potting Soil. Use of composted material and mulch is commonly used. A mix that is too lightweight will not wick up the water from the reservoir effectively. Sybertech recommends that planter customers consult a Horticulturist or other Soil Specialist in determining optimum soil composition.

The results are lush,
beautiful flowers:



Thank you from:



SYBERTECH
Waste Reduction Ltd.

Contact Information

Rob Mitchell

President

Phone: (604) 536-0624

Cellular: (604) 808-4084

Toll Free: 1-888-888-7975 Ext. 1

Toll Free Fax: 1-866-488-4120

Email: **rmitchell@swrl.com**