



SYBERTECH
Waste Reduction Ltd.

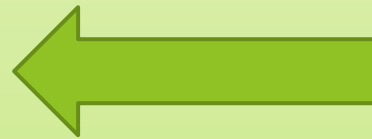
Millennium Series In-Ground Trash Cans & Recycling Containers

Presented by Rob Mitchell



The Norm...

(Issues with animals, birds, wind and over-flowing Trash Cans)



- Would this keep a bear out?
- Do these doors meet ADA requirements?



Water gets in and garbage gets out...



Pollutes ground water
and attracts nuisance
pests such as rodents,
birds and insects.

VS.



One-piece solid
construction –
once the trash
goes in the can, it
stays in the can!

Consolidation

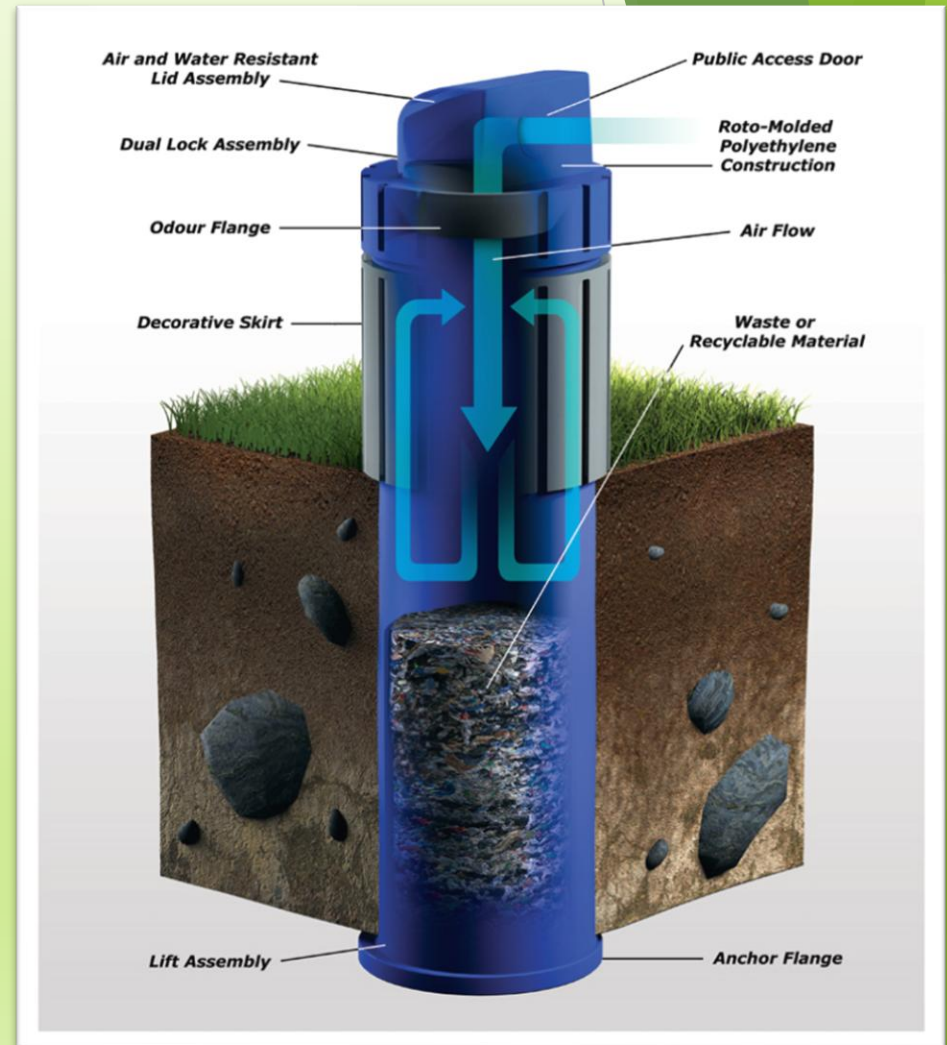


The Solution:



Features of the Millennium Series

- ▶ Five different sizes for all applications: Millennium 500, 1000, 2000, 3000 & Bear Resistant 4000
- ▶ Mill 3000 - 8 ft. deep, buried 5 ft. in the ground (holds 4 cu. yds.)
- ▶ Cooler temperature slows decomposition
- ▶ Specially designed flange redirects air flow and therefore, no smell outside closed unit.
- ▶ One piece polyethylene container, rust & decay free – no leach in or out
- ▶ Odor flange
- ▶ Molded-in anchor flange for anti-flotation
- ▶ All stainless-steel hardware
- ▶ Self-closing counterweighted lid with seal – air & water-tight
- ▶ Lifting support rack and support rack base
- ▶ Decorative Plastic or Steel Skirting available
- ▶ Customizable skirting options



The Benefits

- ▶ **70% labor savings.**
 - ▶ Less frequent pick-up allowing redeployment of staff time
 - ▶ Lessening carbon footprint
 - ▶ Reducing vehicle/equipment time and costs required currently
- ▶ **Self-compacting – the more garbage that goes in, the more it compacts.**
 - ▶ 300-gallon container compacting naturally at 2.5 to 1 equals up to 750 gallons
- ▶ **Once the garbage goes in the can, it stays in the can.**
 - ▶ Reducing litter pick-up
- ▶ **No smell.**
 - ▶ Cooled by the ground naturally
 - ▶ Waste compacts under its' own weight eliminating oxygen which slows decomposition helping to reduce odors
- ▶ **Helps reduce residential trash from being placed inside your current containers adding to your waste disposal costs.**



Safety Features:

- ▶ Helps prevent repetitive back injuries and hernias due to lifting heavy trash bags out of trash barrels (ex. off leash dog parks).
- ▶ Helps avoid employees being stuck by syringes and cut by glass due to lifting bags out manually.
- ▶ Helps employees avoid physical contact with waste.
- ▶ 9-inch opening prevents children and small animals from getting inside.

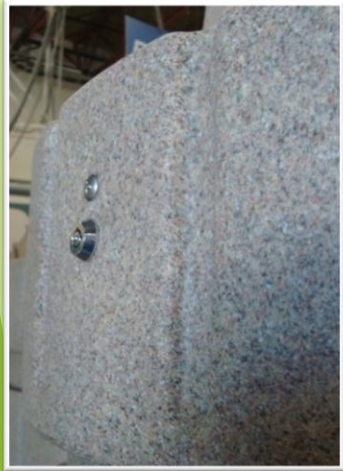
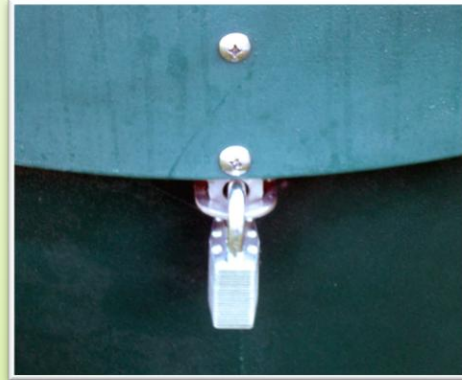
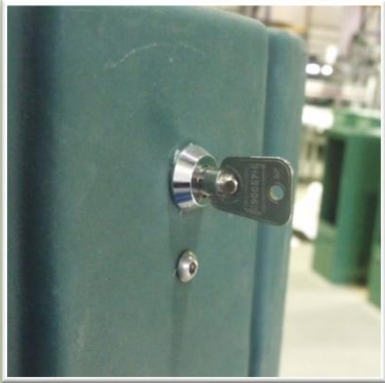


Recycle Options

- ▶ These trash cans can be used for recycling purposes, as well.
- ▶ Smaller access openings (4.5 inch) and good signage reduces contamination from regular trash being placed inside Millennium container.
- ▶ Recycle Blue color associated with recycling by many
- ▶ Clear bags available to easily check for cross-contamination



Dual Keyed Locking System or Pad-Lock System available



Installation Options

- Installation can be accomplished with an auger, a backhoe or with a vactor truck.
- Each unit can be installed in under 1 hour



Concrete Expansion Joint







MULTI-CAN PLACEMENT WITH BLANK LIDS

- ◆ Install a group of In-Ground Trash Cans in high traffic areas and cap off one lid (or more) with a blank lid.
- ◆ When one can is full, simply swap lids with the blank lid can.
- ◆ Wait until all units are full and then pick them all up at once - efficiently reducing the number of pick-ups.



Removal of the Waste

- Once again, there are several options: Cranes, telehandlers, backhoe



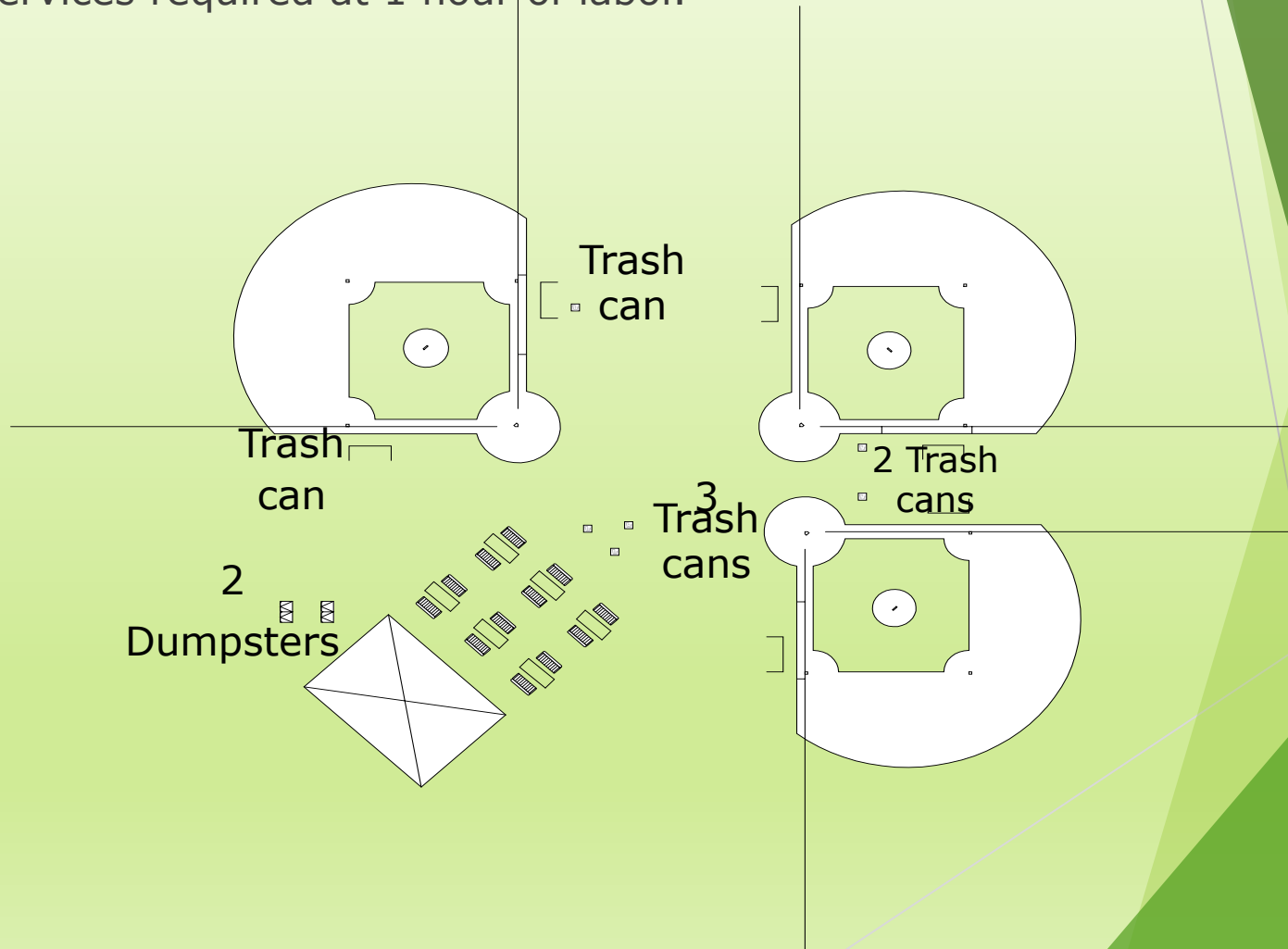
Strapping and Platform

- ▶ Hooks and straps are rated for 1000 lbs
- ▶ Average weight of full trash bag is approximately 200-250 lbs. If the container is full of dog waste, the weight may go up to around 400 lbs
- ▶ In-Ground Trash Can bags hold everything in place

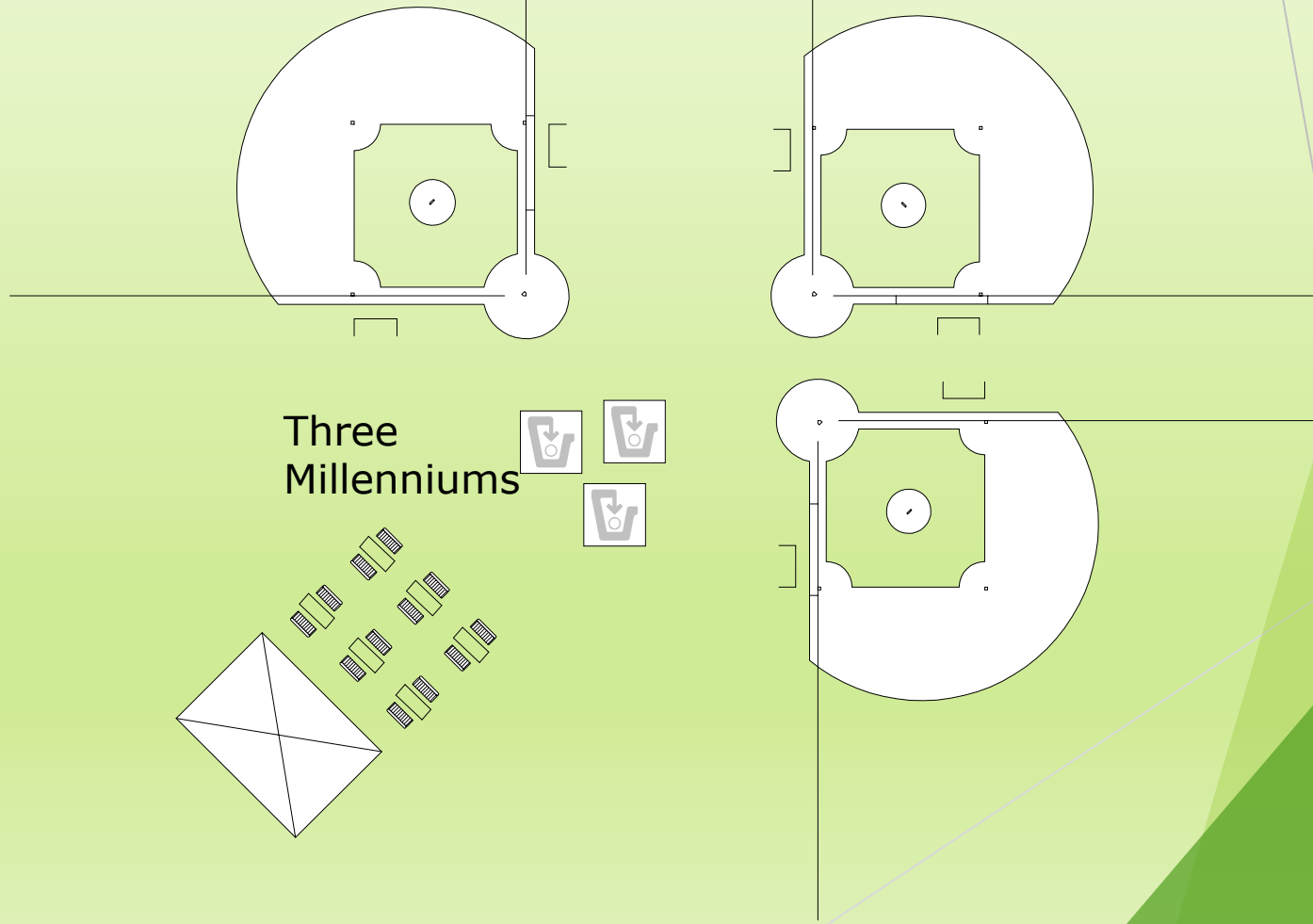


Pre-installation lay-out of Softball Complex:

- ▶ 7 cans emptied daily from May to September.
- ▶ 2 times per day on Saturday's and Sunday's.
- ▶ 189 services required at 1 hour of labor.



**Post-installation of three
Millennium 3000 units reduces labor from
189 services down to only 11 services over
the same period.**





- Millennium 4000 -

Bear-Resistant,
In-Ground Trash Containers



New door opening
design – ADA compliant

North American Bear-Resistant Products Testing Program

Official Test Results

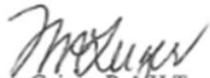
Test File # 15-02

Testing Date: June 17-18th, 2015

Product Supplier: Sybertech Waste Reduction Ltd.

We are happy to inform you that on June 18th, 2015, your Sybertech Millennium 4000 container passed the captive bear test for bear resistant products at the BC Wildlife Park in Kamloops, British Columbia. During the duration of this test your Sybertech Millennium 4000 product withstood the forces exerted by 60 minutes of black bear contact time and was not breached and remained intact and in good condition. The Sybertech Millennium 4000 container therefore is officially deemed bear resistant.

Thank you for participating,



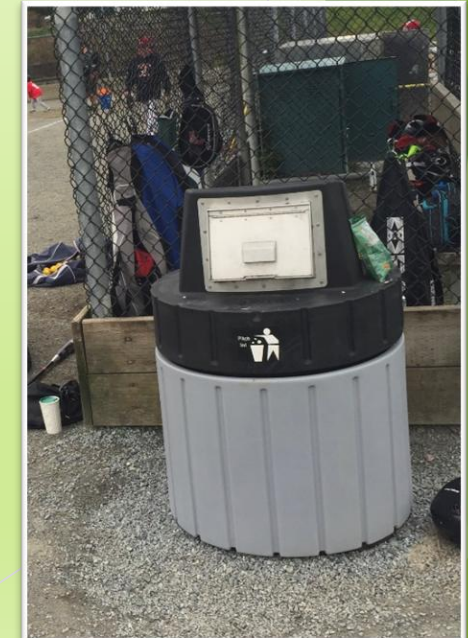
Tara Geiger, R.A.H.T.
Animal Care Supervisor
BC Wildlife Park



Glenn Grant,
General Manager
BC Wildlife Park



Frank Ritcey,
Provincial Wild Safe BC Coordinator
BC Conservation Foundation



Opportunities for Partnerships and Sponsorships

- ▶ “Adopt a Can” opportunities can be offered to local businesses.
- ▶ The sponsor would receive brand recognition by installing a permanent sign on the can.
- ▶ Facility user groups could be encouraged to sponsor a can because they benefit most from the conversion.



MORE OPTIONS:

- ▶ Stainless Steel T-handles
- ▶ Recycle Baskets
- ▶ Steel or Molded Skirts
- ▶ Tamper Bar





Mill 500 - Above Ground Trash Cans



- ▶ Large capacity
- ▶ Anchored to ground
- ▶ Great for areas where the In-Grounds may not be feasible



Thank you from:



SYBERTECH
Waste Reduction Ltd.

Contact Information

Rob Mitchell

President

Phone: (604) 536-0624

Cellular: (604) 808-4084

Toll Free: 1-888-888-7975 Ext. 1

Toll Free Fax: 1-866-488-4120

Email: **rmitchell@swrl.com**